

**TRANSPARENT  
ACCOUNTABLE AND  
SUSTAINABLE GROWTH**



# Agenda

- Credentials
- Building Product Division
- Construction of Buildings and Precast Technology

# Company Profile

Credentials

Building  
Division

Precast  
Technology

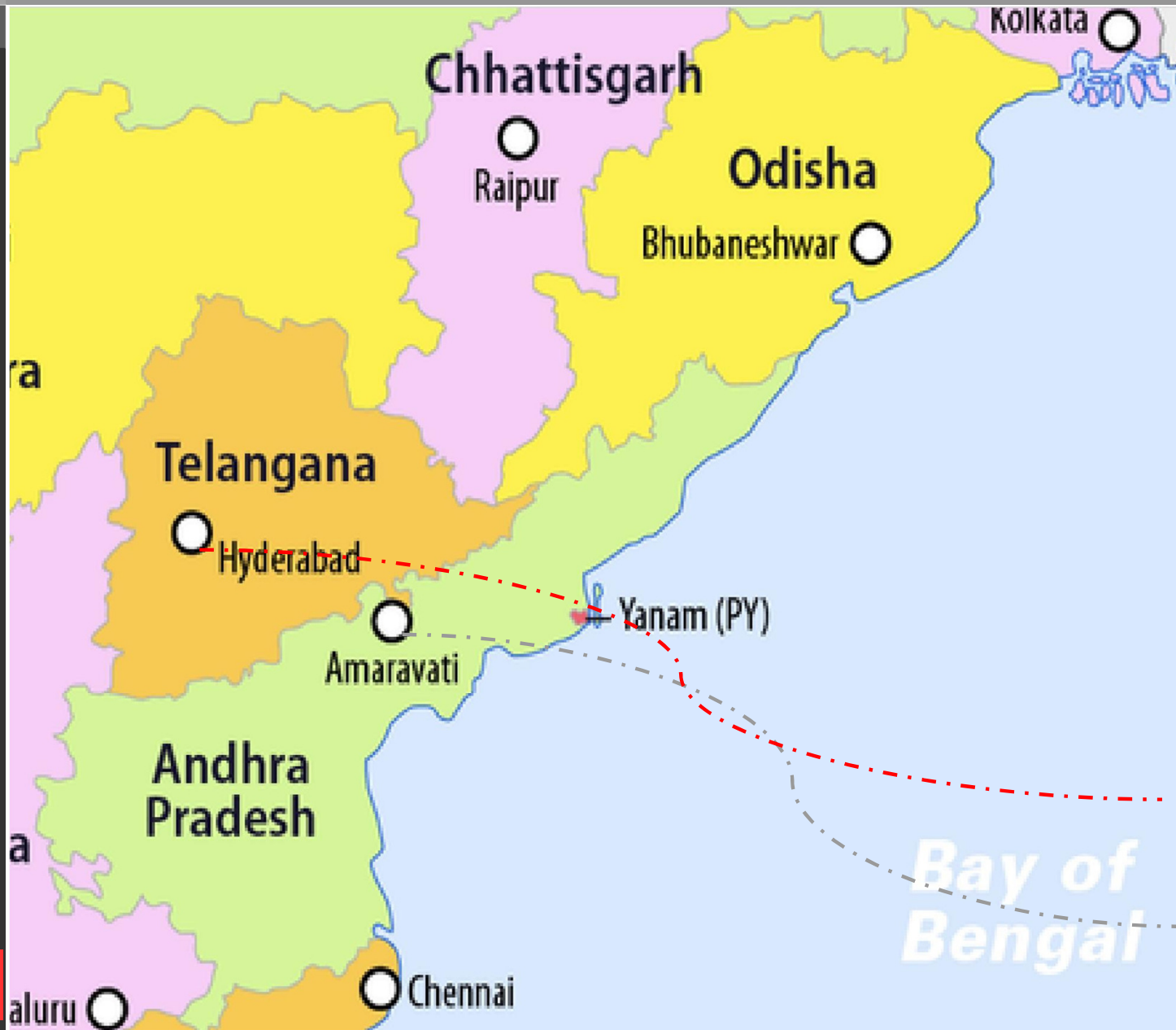
- 1979 Founded by Mr.Cherukuri Satyanarayana
- 1994 Established GMP facility at Keesara for APIs and Fine Chemicals.
- 2007 choose to go green by entering into mushroom production at Peddapuram, East Godavari and Medchal, Telangana.
- We are the largest quality producers in both the products.
- 2017 entered into the line of building products at Keesara, and Peddapuram Andhra pradesh and Patancheru, Telangana.

# Chemical Division

Credentials

Building Division

Precast Technology



**Unit-II  
Patancheru  
Telangana**

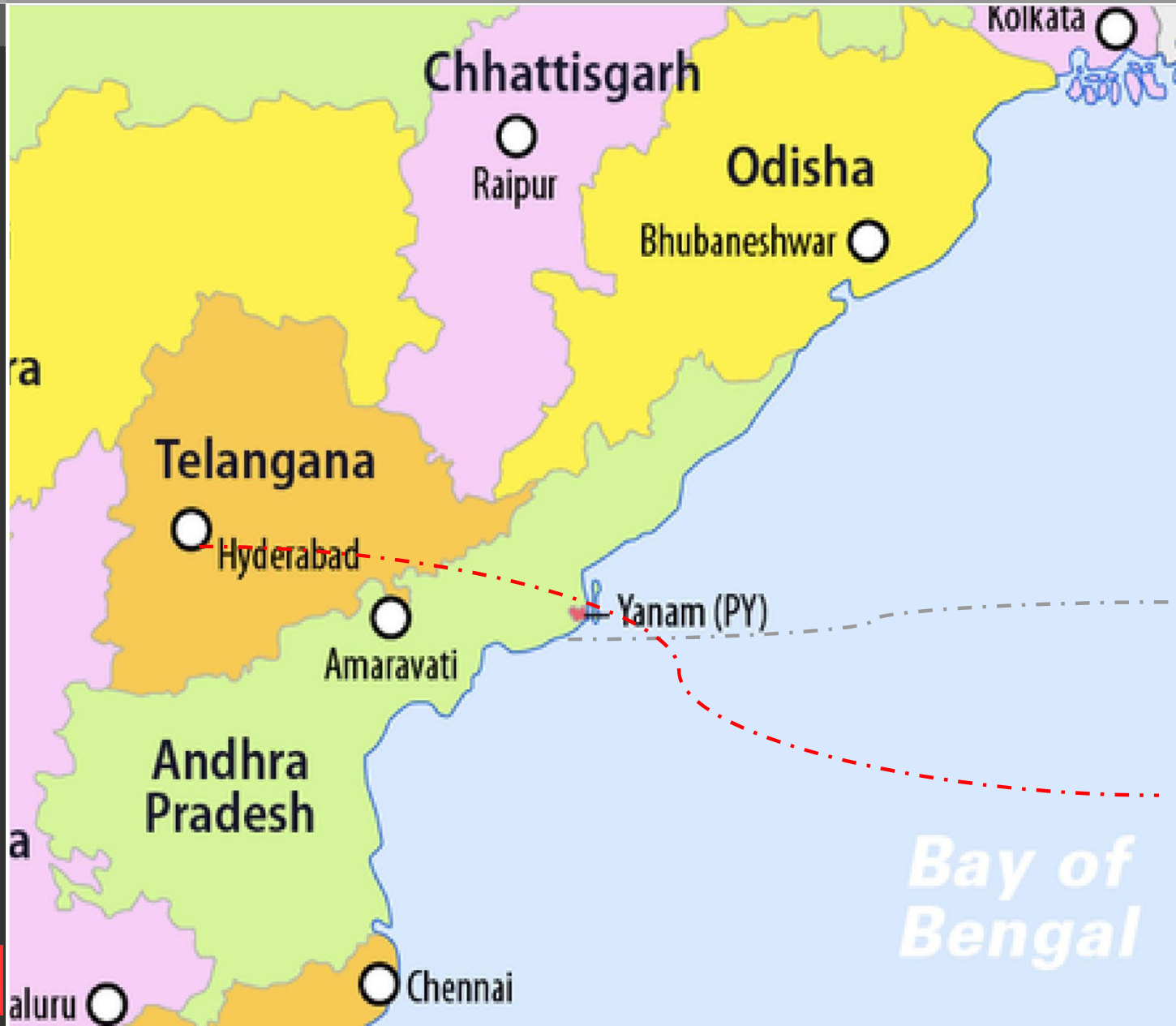
Unit-I  
Keesara  
Andhra Pradesh

# Agri Division

Credentials

Building Division

Precast Technology



Unit-II  
Peddapuram  
Andhra Pradesh

Unit-I  
Medchal  
Telangana

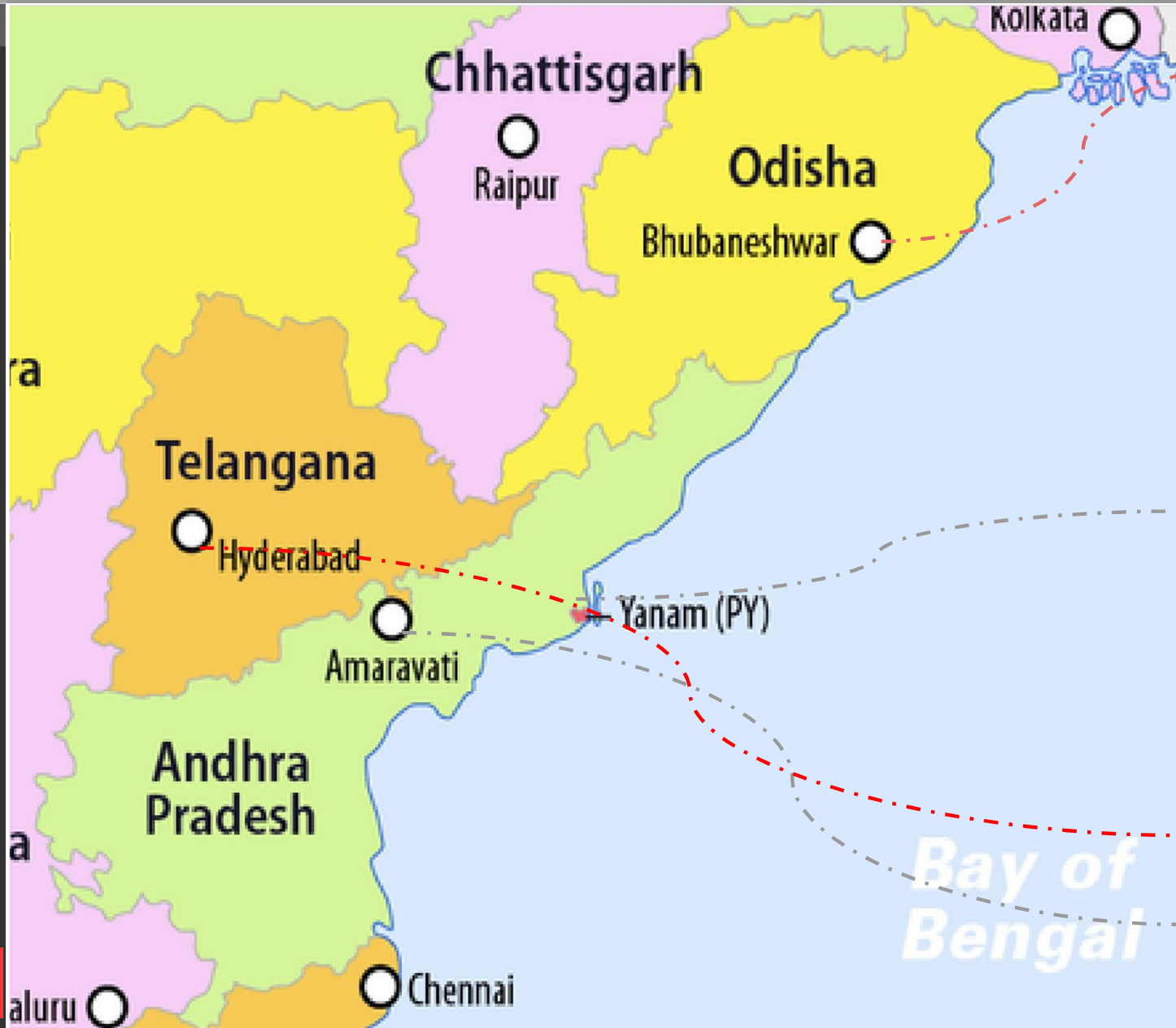
*Bay of Bengal*

# Building Products Division

Credentials

Building Division

Precast Technology



PIPL

Unit-III  
Peddapuram  
Andhra Pradesh

Unit-II  
Patancheru  
Telangana

Unit-I  
Keesara  
Andhra Pradesh

Bay of Bengal

# Salient Features - Building Products Division

Credentials

Building  
Division

Precast  
Technology

- This state of the art automated plant system is equipped with the top of the line equipment.
- For precast from ELEMATIC, FINLAND.
- For Interlocking designer Pavers from REKERS, GERMANY.
- For AAC Dutch Technology.
- Our AAC and Paver plants are the single largest plants in India to produce panels, blocks and interlocking designer pavers.
- Ancillary facilities for the uninterrupted operation of the plant are dedicated batching plants, Co-generation power plant for production of Steam and Power required for the processes.
- Proposed 2.0 MW Rooftop Solar Power Plant.
- We have fully equipped computerized Testing lab facility for Quality Testing of various building products.
- We are a professional manufacturing and supplier of building products focusing and committed to develop sustainable cost effective solutions and not just products.

# Projects - Building Products Division

Credentials

Building  
Division

Precast  
Technology

- Keesara Factory Building 200000 sqft
- Patancheru Factory Building 60000 sqft
- Peddapuram Factory Building 43000 sqft
- GHMC Bowrampet 628000 sqft - in progress
- Rajahmundry Commercial building 80000 sqft in progress
- Jakkampudi Commercial building 648000 sqft - in progress
- BDA Subudhipur 600000 sqft - in progress



# Advantages of Precast Concrete Construction

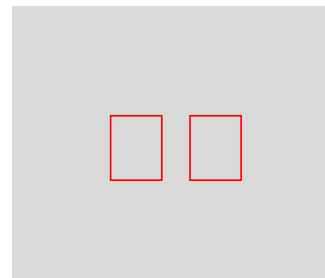
Credentials



**Speed (2x)**



**Low Manpower**



**Economical**

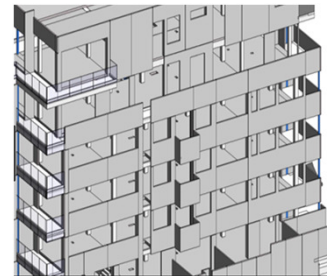


**No Plastering**

Building  
Division



**Durable Buildings**



**Better Design**



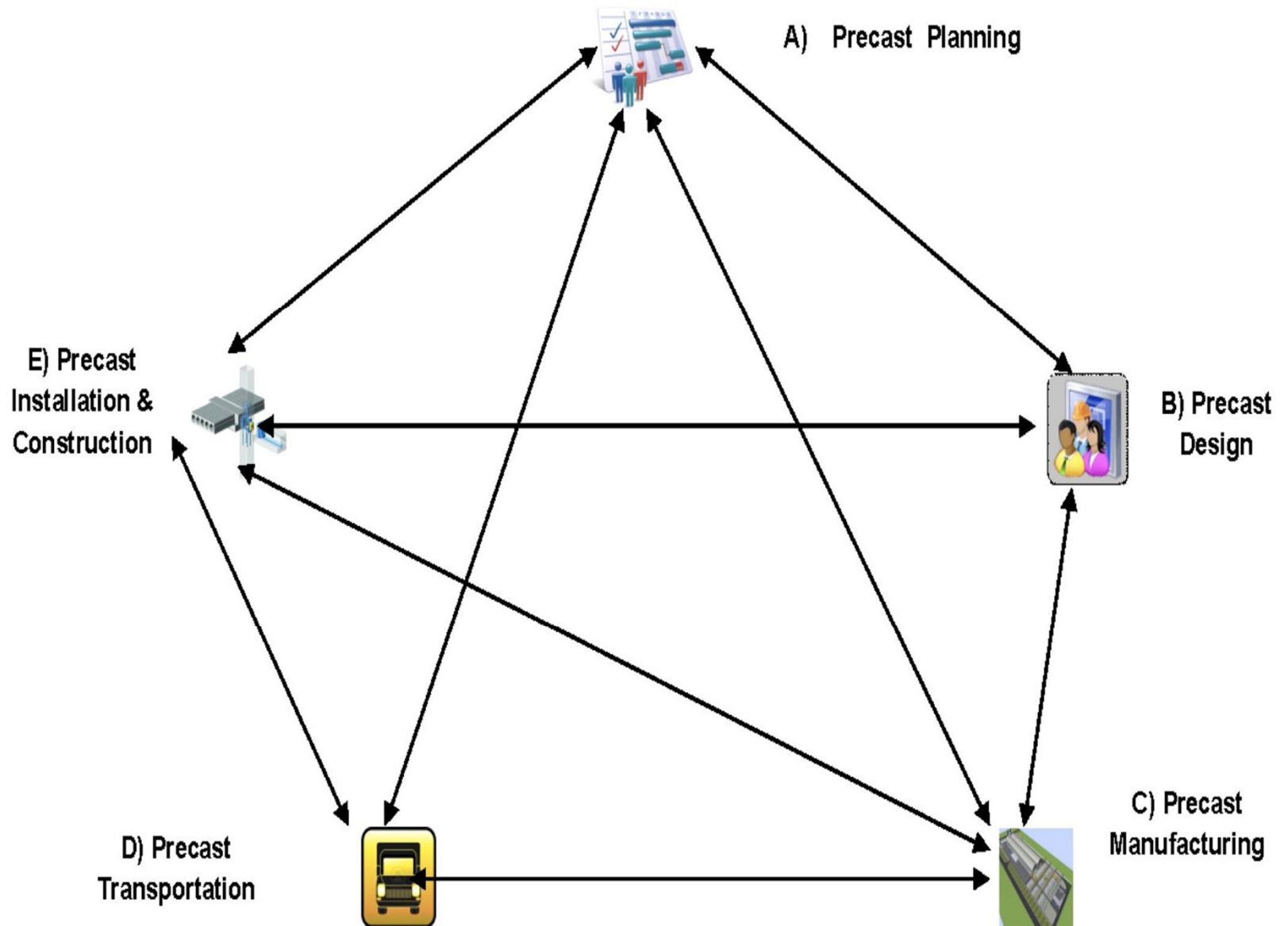
**No wastage**



**Eco Friendly**

Precast  
Technology

# Construction of Buildings Precast Technology Cloud Collaboration



Credentials

Building  
Division

Precast  
Technology

inventa

# EWS HOUSING PROJECT

## Conventional Architectural Plan

Credentials

Building Division

Precast Technology



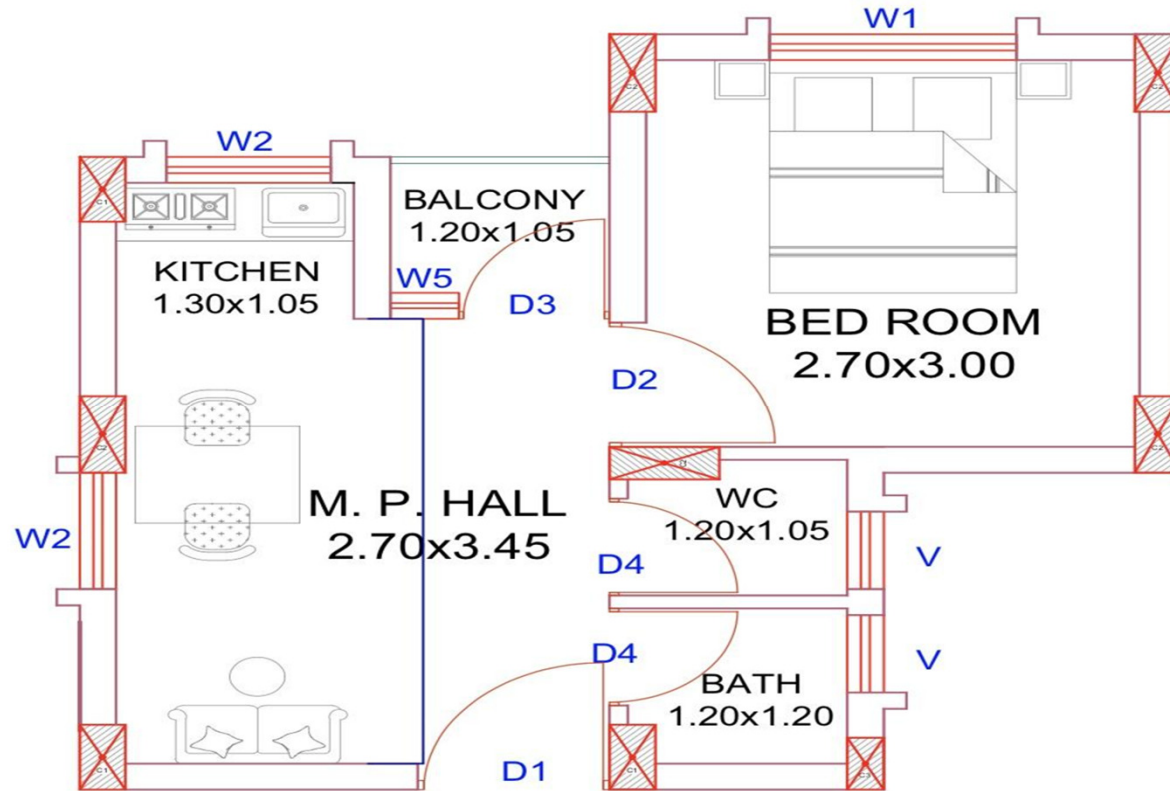
# EWS HOUSING PROJECT

## Conventional Design

Credentials

Building Division

Precast Technology



**UNIT PLAN**

DESCRIPTION	AREA DETAILS
1 UNIT CARPET AREA	23.07 sq.m
1 UNIT SUPER BUILT-UP AREA	34.52 sq.m
BUILT-UP AREA FOR A FLOOR	276.14 sq.m
TOTAL BUILT-UP AREA FOR A BUILDING	276.14 X 5 = 1380.70 sq.m



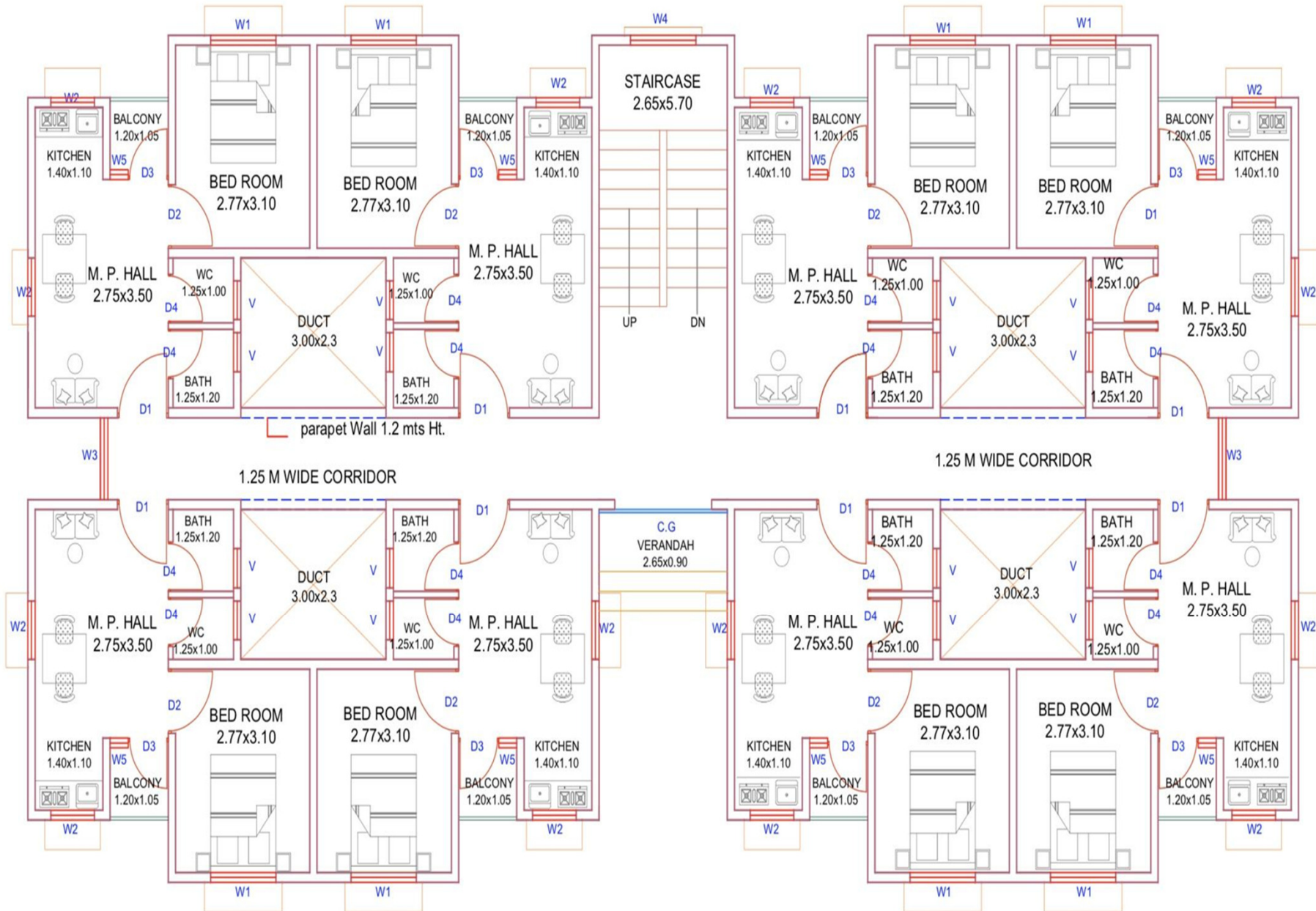
# EWS HOUSING PROJECT

## Precast Architectural Plan

Credentials

Building Division

Precast Technology



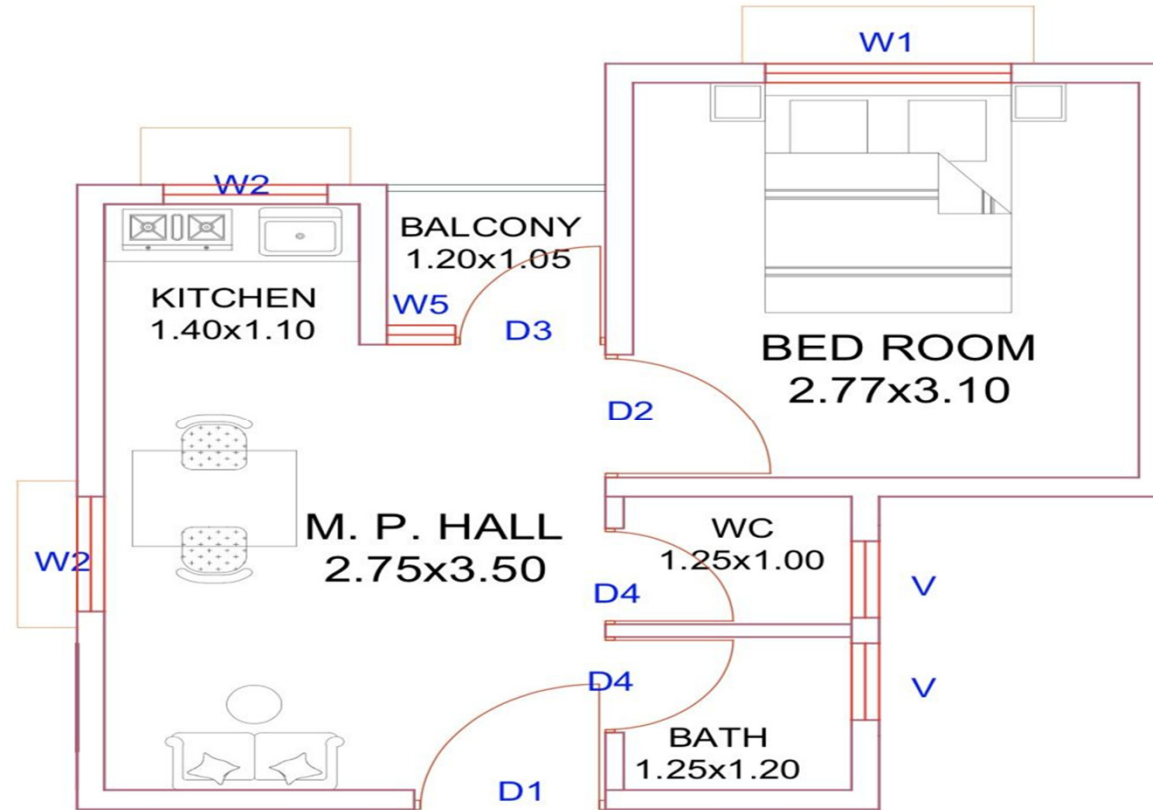
# EWS HOUSING PROJECT

## Precast Design

Credentials

Building  
Division

Precast  
Technology



**UNIT PLAN**

DESCRIPTION	AREA DETAILS
1 UNIT CARPET AREA	24.32 sq.m
1 UNIT SUPER BUILT-UP AREA	36.08 sq.m
BUILT-UP AREA FOR A FLOOR	288.67 sq.m
TOTAL BUILT-UP AREA FOR A BUILDING	288.67 X 5 = 1443.33 sq.m

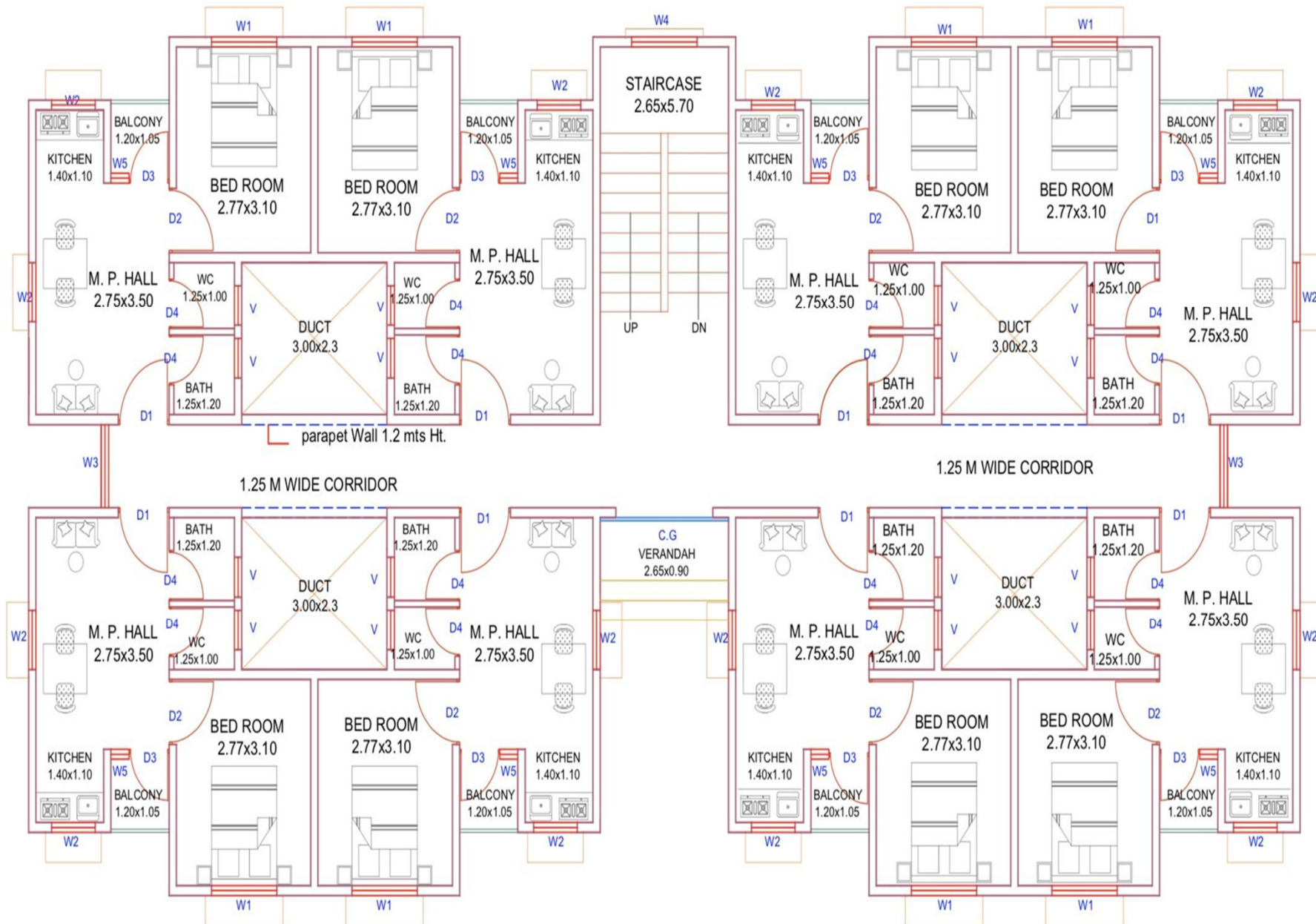
# EWS HOUSING PROJECT

## Proposed Precast Architectural Plan

Credentials

Building Division

Precast Technology



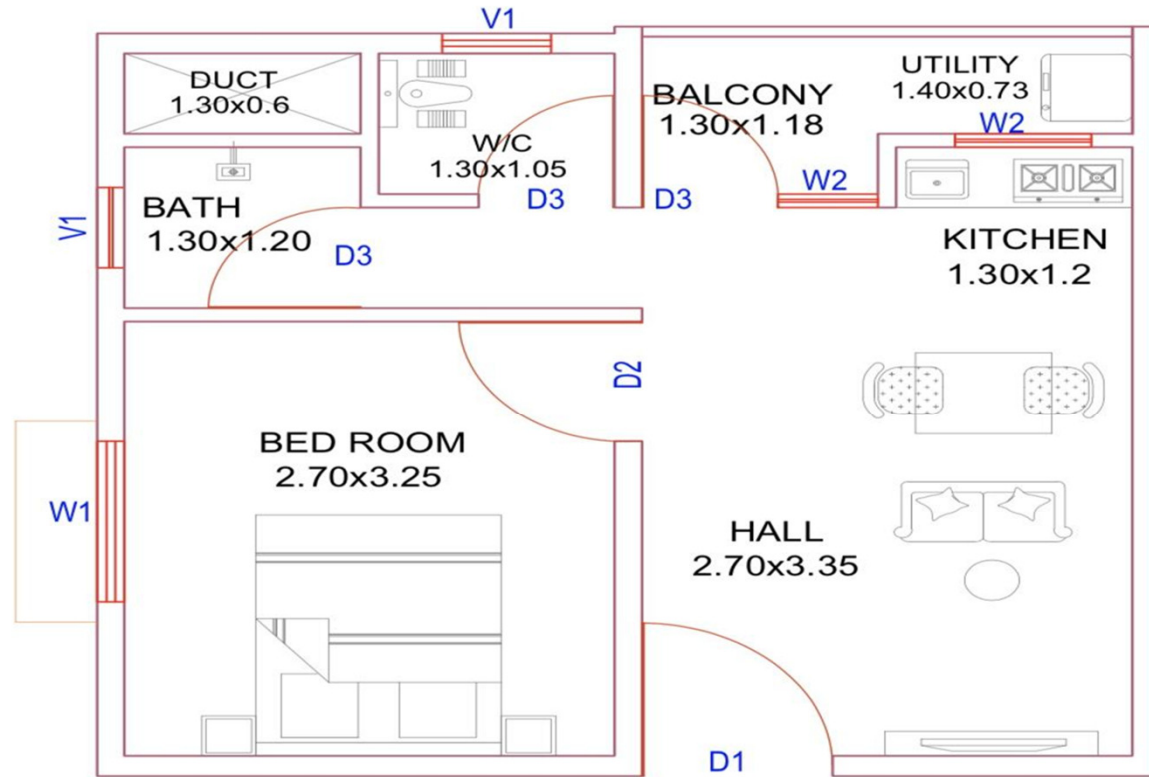
# EWS HOUSING PROJECT

## Proposed Precast Design

Credentials

Building  
Division

Precast  
Technology



**UNIT PLAN**

DESCRIPTION	AREA DETAILS
1 UNIT CARPET AREA	27.5 sq.m
1 UNIT SUPER BUILT-UP AREA	37.98 sq.m
BUILT-UP AREA FOR A FLOOR	303.87 sq.m
TOTAL BUILT-UP AREA FOR A BUILDING	303.87X 5 = 1519.35 sq.m



# EWS HOUSING PROJECT

## Comparison of Conventional to Precast

Credentials

Building  
Division

Precast  
Technology

DESCRIPTION	AREA DETAILS		
	CONVENTIONAL SCHEME	PRECAST SCHEME	PROPOSED SCHEME
1 UNIT CARPET AREA	23.07 sq.m	24.32 sq.m	27.5 sq.m
1 UNIT SUPER BUILT-UP AREA	34.52 sq.m	36.08 sq.m	37.98 sq.m
BUILT-UP AREA FOR A FLOOR	276.14 sq.m	288.67 sq.m	303.87 sq.m
TOTAL BUILT-UP AREA FOR A BUILDING	1380.70 sq.m	1443.33 sq.m	1519.35 sq.m

# EWS HOUSING PROJECT

Credentials

Building  
Division

Precast  
Technology



inventra

A grayscale image of a hand holding a globe. A semi-transparent city map is overlaid on the globe, showing street grids and building footprints. The hand is visible at the bottom left, supporting the globe from underneath.

**inventaa**

**Thank You**

**TRANSPARENT,  
ACCOUNTABLE AND  
SUSTAINABLE GROWTH  
IN TOUCH WITH TOMORROW**